

IP-X Dual Frequency Mobile RW Reader with Bluetooth™ Connectivity



Group

IPICO INC

Ontario, Canada

tel: +1 905 631 6310

fax: +1 905 631 6614

info.can@ipico.com

www.ipico.com

Operations

South Africa

Pretoria

tel: +27 12 345 9520

fax: +27 12 345 5834

info.sa@ipico.com

Australasia

Clontarf,

Queensland

tel: +61 7 3889 5799

fax: +61 7 3889 5980

info.aus@ipico.com

North Asia

Shanghai, China

tel: +86 21 5080 0345

fax: +86 21 5027 8271

info.cn@ipico.com

China

Beijing, China

tel: +86 10 8280 0541

fax: +86 21 8280 0546

info.cn@ipico.com

Europe

Valence, France

tel: +33 475 443 238

fax: +33 475 443 238

info.europe@ipico.com

USA

Georgia, USA

tel: +1 770 552 9654

fax: +1 404 601 9679

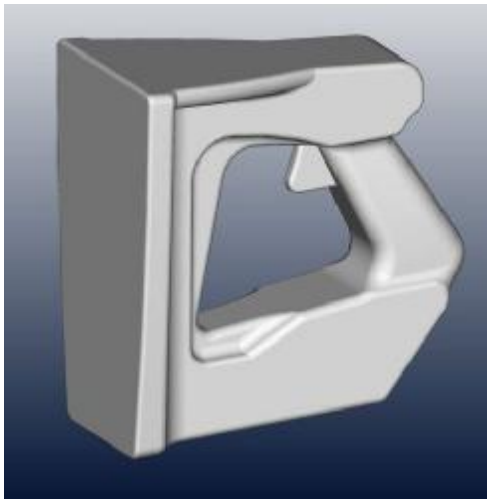
info.usa@ipico.com

Description

The IP-X Dual Frequency Mobile reader consists of an integrated set of antennas, RF unit, and battery, and is connected by a Bluetooth™ (BT) link to any BT-enabled PDA, PC, DIMI-SA, or other control/storage device. The complete reader is integrated into an ergonomically shaped ABS housing. When the trigger switch is activated, any tags in the field will be read, and the reader will transmit their codes (if valid) via the BT link to the host controller. Bluetooth™ Class 1 is specified with a typical range > 10m, and 30m line of sight.

IPICO's Dual Frequency products offer the ability to operate tags in lossy media, with a high data rate not normally possible in Low Frequency systems. The technology allows relatively long read ranges to be achieved when tags are attached to or embedded in liquids, biological materials, e.g. food-stuffs, trees, animals. The Mobile Reader provides a useful addition to the Short, Medium and Long range DF reader families, allowing convenient recording of tags to be deployed in larger applications e.g. access control, people-spotting, underground conduit marking (pipes, ducts).

This reader allows the user to do remote registration and inventory control, and process the data in real time as long as it remains in BT range of the host controller's BT interface.



Key Features

- § Complies with USA, European, Australian and RSA spectrum regulations
- § Robust anti-collision protocol
- § High tag bit rate : 128 kbit/sec
- § Tag ID codes are CRC-validated.
- § Code repeats are suppressed if operated in "Continuous trigger" mode (only one code per tag is sent to the host)
- § Range (Credit Card Tag): 200 – 300 mm
- § Ergonomic, light-weight handheld design
- § Uses rechargeable battery pack which lasts for typically 7000 reads in triggered mode
- § Bi-directional communications with host controller using Bluetooth™ (Class 1) RF interface
- § Trigger switch for reading; ON/OFF power switch; Auto SWITCH OFF
- § LED status indicators
- § Audible beep indicates valid code received
- § Reads EM 4322, EM4522 (128 kbit/s) tags; Writes to EM4522 tags
- § High impact ABS housing

Specifications

| Item | Specification |
|--|---|
| Power Supply | 7.2V Lithium Polymer rechargeable battery |
| Operating current | 350 mA (RF ON), 80 mA (RF OFF, idle mode) |
| Operating Frequency | Transmit 125 kHz, Receive 6.8 MHz |
| Read Range | Up to 300 mm, depending on tag type and environmental conditions |
| Communications | Bluetooth™ Class 1, serial, bi-directional communications between Reader & host |
| Indicators | Red LED flashing: Power ON, Reader Ready Green LED flashing accompanied by audible beep: Valid code received Blue LED continuous: BT connection |
| Reader controls | Power ON/OFF switch & Auto SWITCH-OFF Trigger switch (activates RF, mode set by host controller) |
| Reader Modes (set up by host controller) | Continuous: Reader transmits all received valid codes to host Triggered mode: Reader transmits one code only for each different ID received (repeats are suppressed) Tag ID: 64 bits including 16-bit CRC |
| Physical | Dimensions: 180 x 160 x 95 (mm LxHxW), Weight 620g including battery |
| Environmental (Production model) | IP65 compliant (not certified) |
| Temperature limits (battery dependent) | Operation: -20 – 70 °C, Storage: -40 – 80 °C |

Ordering Information

| Product Name | Product Code | Description |
|---------------------|--------------|-------------------|
| DF Mobile Reader RW | IP3263 | IP-X DFRDR-MOB-RW |